

# AC Transmission Segment B **New York Energy Solution** PPTN Project Update

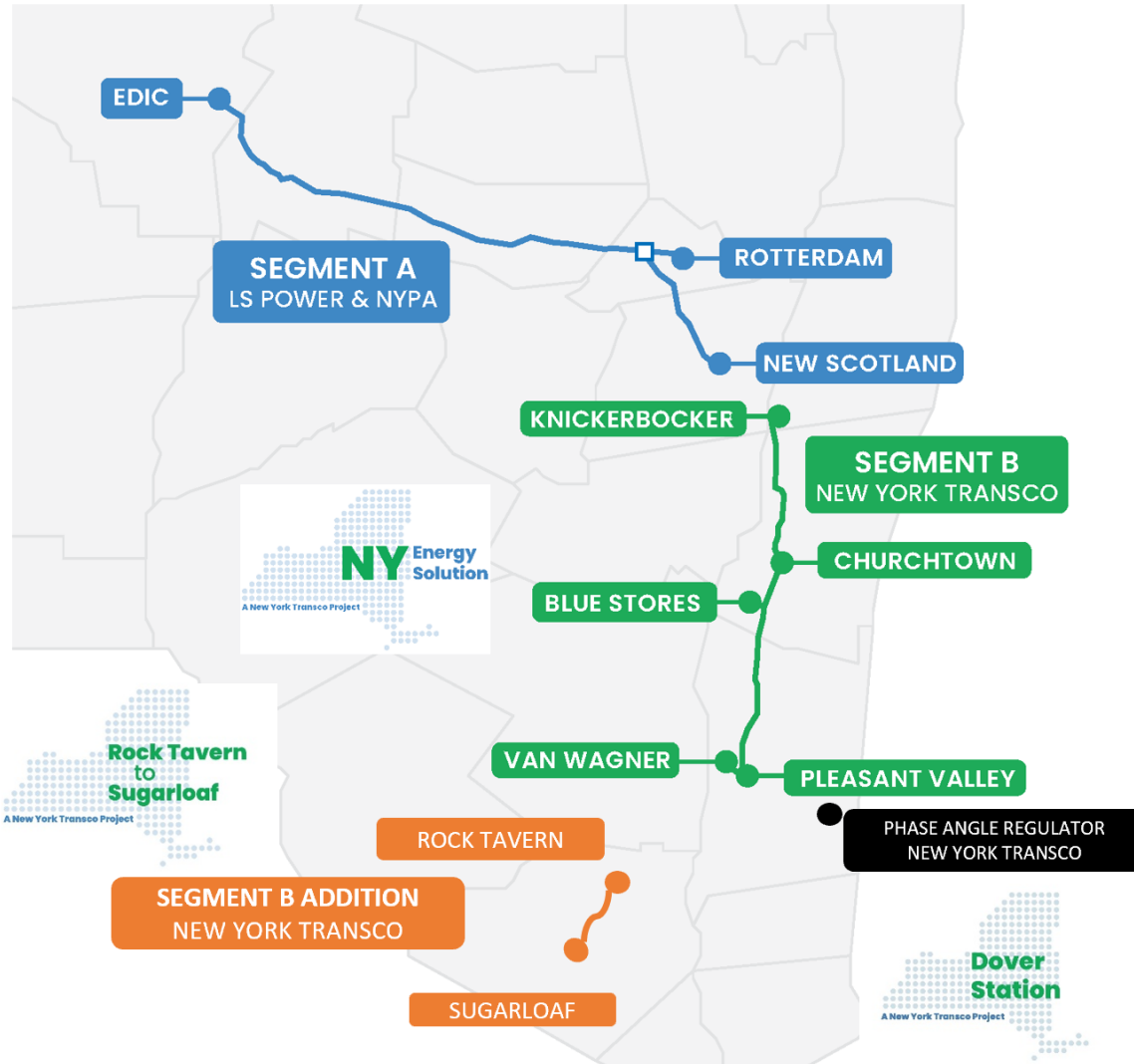
NYISO ESPWG Meeting  
December 17, 2021

# Agenda

---

- Project Overview
- Permitting Milestones
- Construction Schedule/ Status

# Project Overview



- Public Policy, Competitive Solicitation Projects
- Relieve Congestion & Facilitate Renewables
- In-Service December 2023

## Segment A

- Utica to outside of Albany

## Segment B (New York Energy Solution)

- Schodack to Pleasant Valley

## Segment B Addition (Rock Tavern to Sugarloaf)

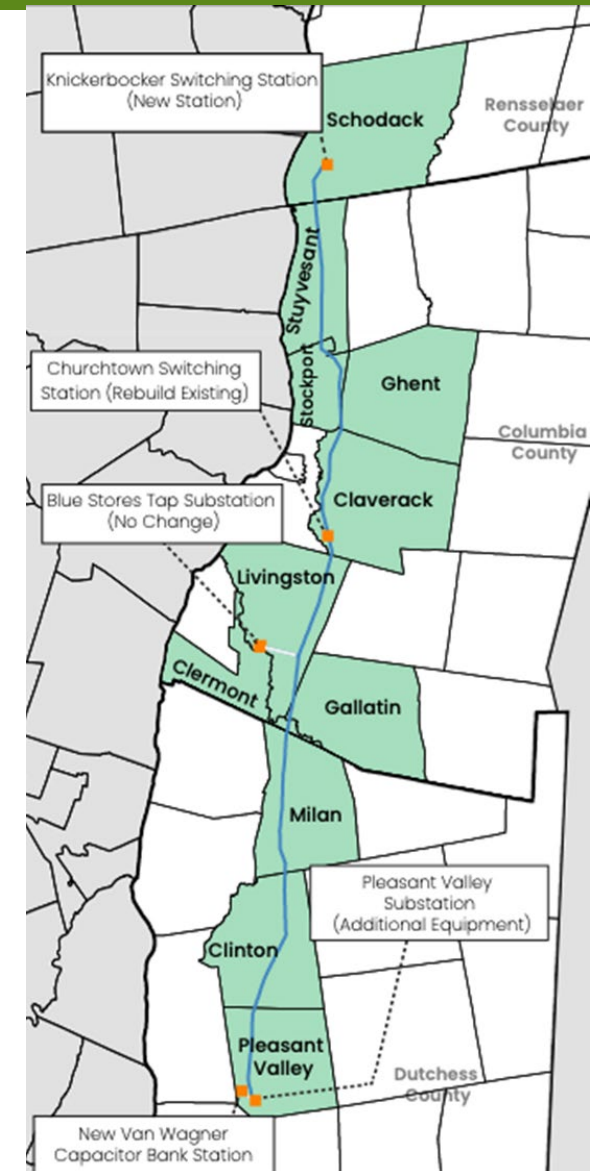
- New Windsor to Chester

## Phase Angle Regulator (Dover Station)

- Dover Plains

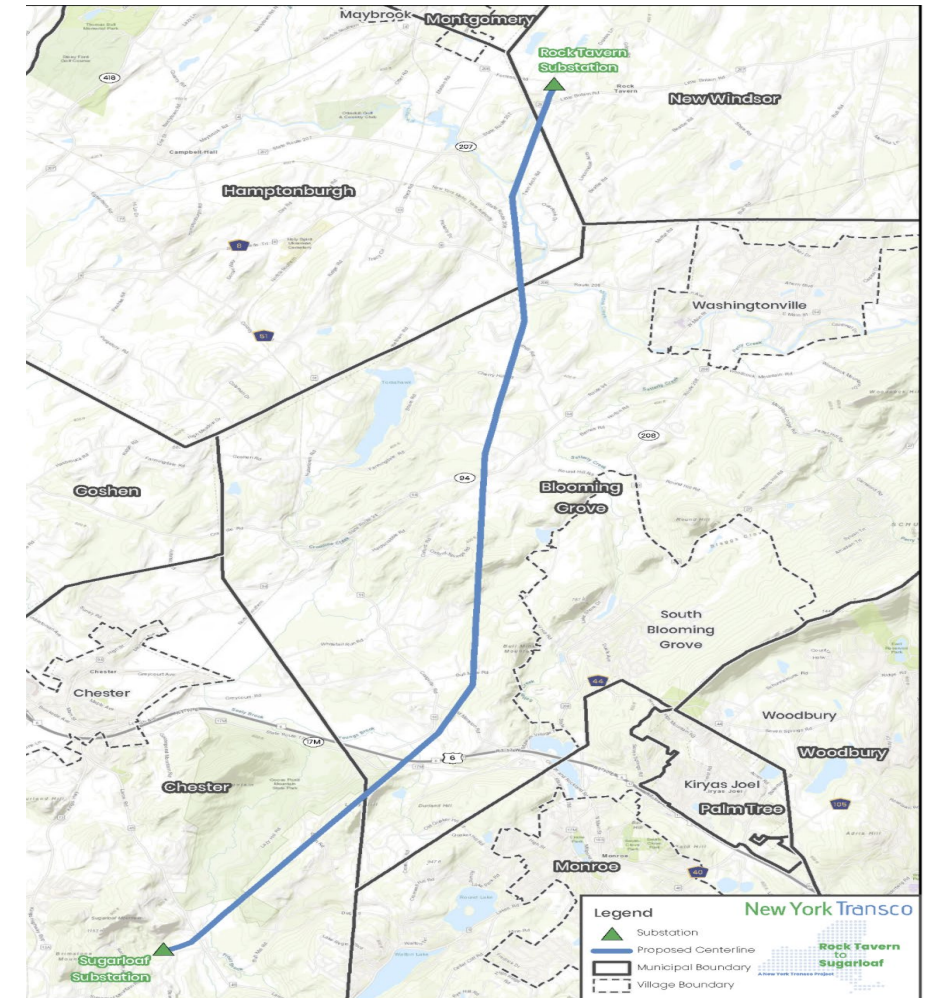
# New York Energy Solution

- Electric transmission upgrade – double circuit 345/115 kV
  - Retire and replace aging electric infrastructure
  - Enhance reliability
- Reuses existing utility rights-of-way & property
- Approx. 55 miles transmission line and station work through 11 towns, Schodack to Pleasant Valley
- Removes 80-year old assets; 230 less structures



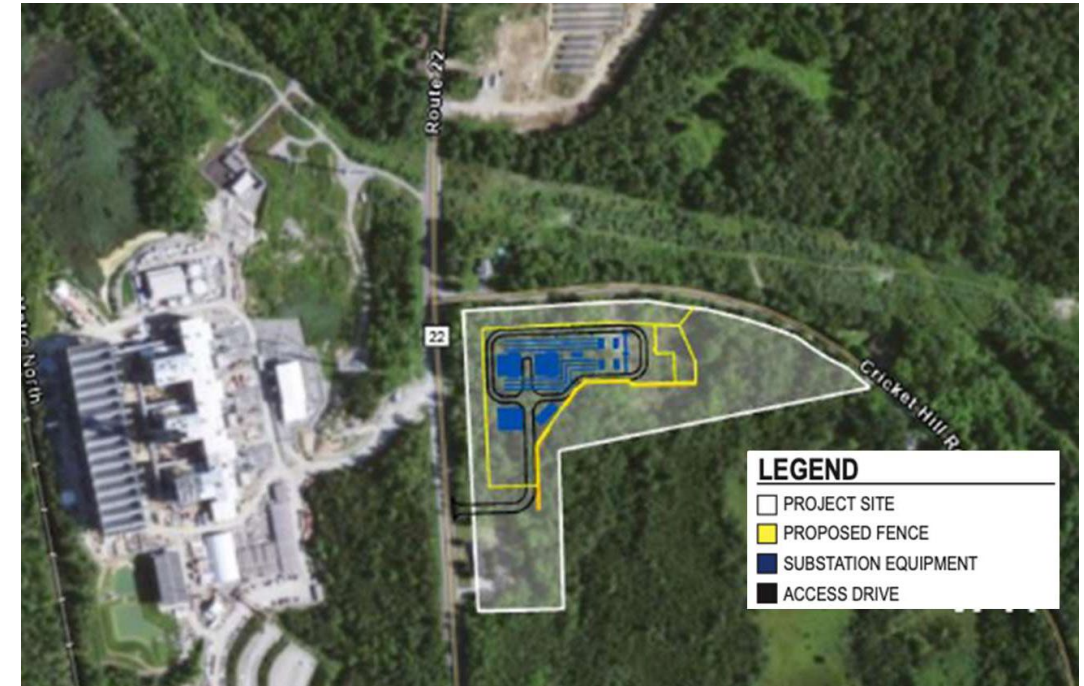
# Rock Tavern to Sugarloaf (Segment B Additions)

- Approx. 12 - mile single circuit 115kV line
- Rebuild of existing line within existing utility corridor
- Rebuild of existing switching station at Sugarloaf
- 115-138kV autotransformer and 0.3-mile 138kV transmission line to interconnect to O&R Sugarloaf substation



# Dover PAR Station

- New Phase Angle Regulator Station to be installed on the existing 398 line
- Addresses transfer limit degradation on the NY/NE interface





# Permitting Milestones

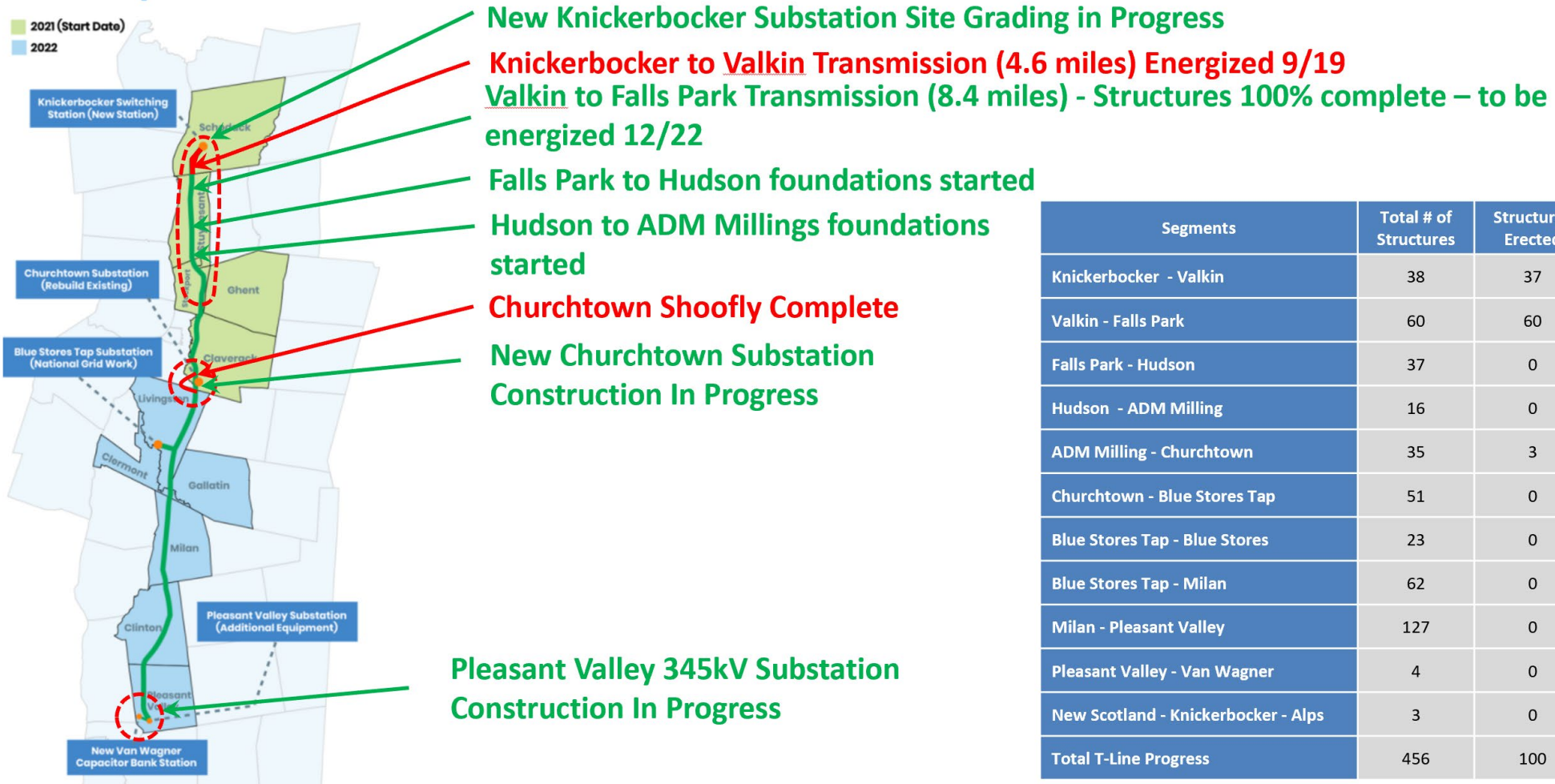
---

- NYES Key Milestones
  - EM&CP Phase 2 Section 2 Approval – October 11, 2021
  - All State and Federal Approvals Received
- Rock Tavern to Sugarloaf Key Milestones
  - Article VII Approval – September 9, 2021
  - EM&CP Phase 1 Submitted – October 19, 2021
- Dover PAR Key Milestones
  - Local Permit Application Submitted – October 1, 2021

# NYES Project Construction Update

- Anticipated Construction Completion - December 2023

## Town-by-Town Overview



Segments	Total # of Structures	Structures Erected
Knickerbocker - Valkin	38	37
Valkin - Falls Park	60	60
Falls Park - Hudson	37	0
Hudson - ADM Milling	16	0
ADM Milling - Churchtown	35	3
Churchtown - Blue Stores Tap	51	0
Blue Stores Tap - Blue Stores	23	0
Blue Stores Tap - Milan	62	0
Milan - Pleasant Valley	127	0
Pleasant Valley - Van Wagner	4	0
New Scotland - Knickerbocker - Alps	3	0
<b>Total T-Line Progress</b>	<b>456</b>	<b>100</b>



# Construction Schedule

---

- Rock Tavern to Sugarloaf
  - Initial Tree Clearing work to start – Q1 2022
  - Anticipated Construction Start - Q2 2022
  - Anticipated Construction Completion - December 2023
- Dover PAR
  - Anticipated Construction Start - Q4 2022
  - Anticipated Construction Completion - December 2023